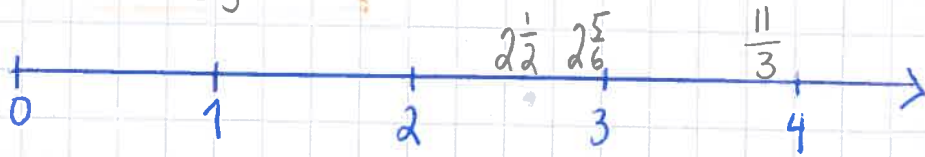


Module 3, leçon 2

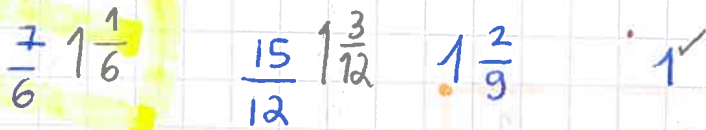
no 2 $2\frac{1}{2}$, $\frac{11}{3}$, $2\frac{5}{6}$ (points de repère)



no 3

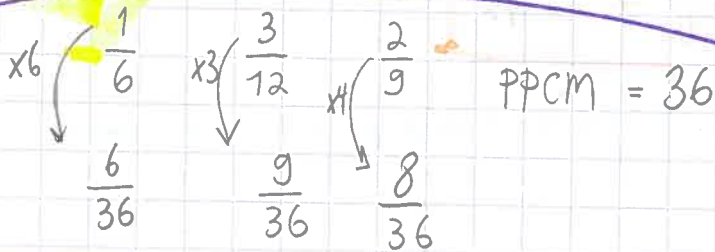


a) Nombres mixtes



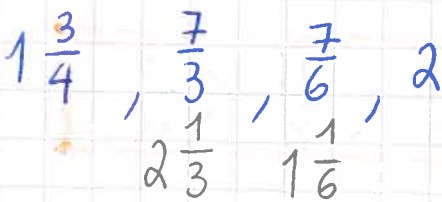
$$\therefore 1 < \frac{7}{6} < 1\frac{2}{9} < \frac{15}{12}$$

*



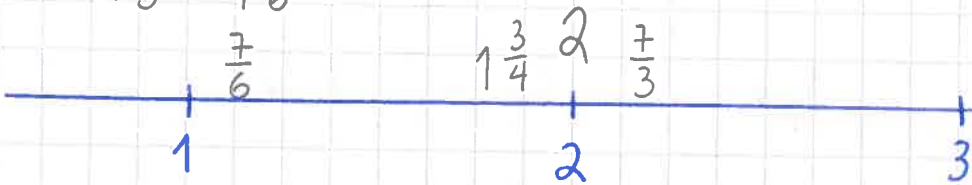
* besoin de trouver les dénominateurs communs

b)



$$\therefore \frac{7}{6} < 1\frac{3}{4} < 2 < \frac{7}{3}$$

Nombres mixtes



c) $\frac{7}{4}$, $\frac{15}{10}$, $\frac{11}{5}$, 2

$1\frac{3}{4}$, $1\frac{5}{10} = 1\frac{1}{2}$, $2\frac{1}{5}$, 2

$$\therefore \frac{15}{10} < \frac{7}{4} < 2 < \frac{11}{5}$$

d) $\frac{10}{4} = 2\frac{2}{4} = 2\frac{1}{2}$ $2\frac{1}{3}$

$\frac{9}{2} = 4\frac{1}{2}$ 3

$$\therefore 2\frac{1}{3} < \frac{10}{4} < 3 < \frac{9}{2}$$